

Appendix 5.c. Stakeholder Input – Place-based Activities

Agricultural Transition Comments

Agritourism Comments

Development Comments

Food Hub Comments

Ideas + Innovation Comments

Agriculture – Larger Production Comments

Markets Comments

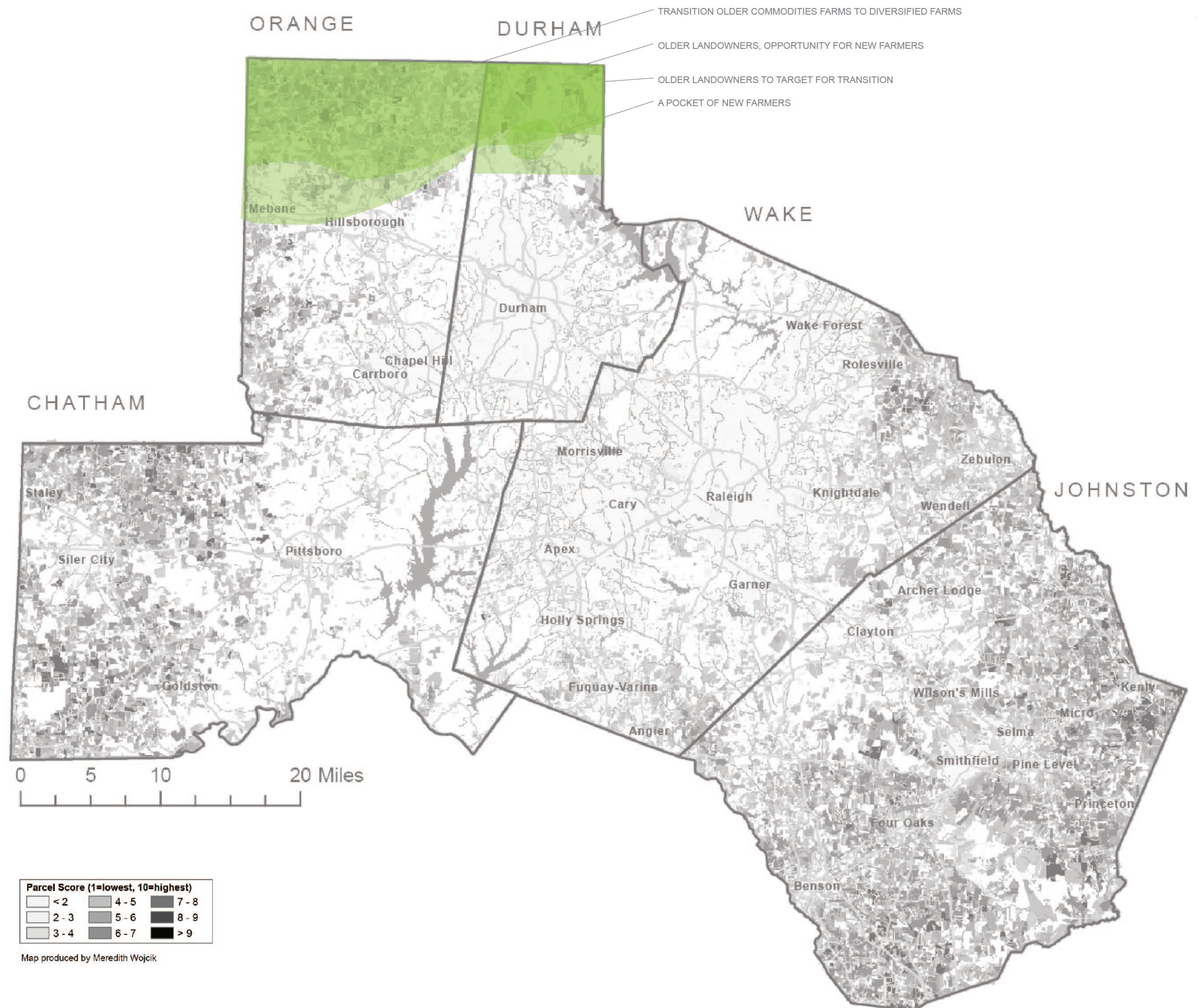
Agriculture – Smaller Diversified Comments

Soil Comments

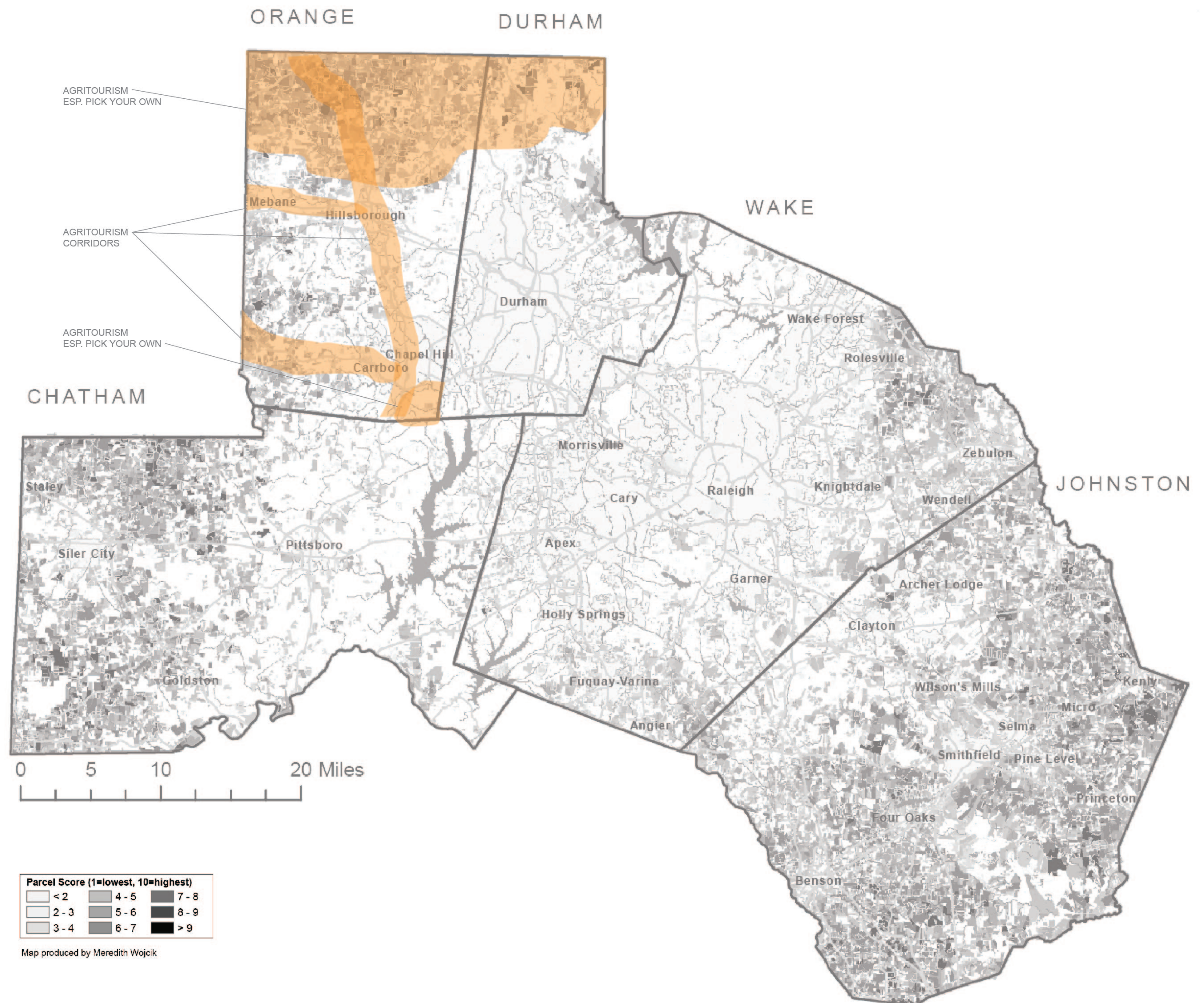
Urban Agriculture Comments

Water Quality/Watershed Comments

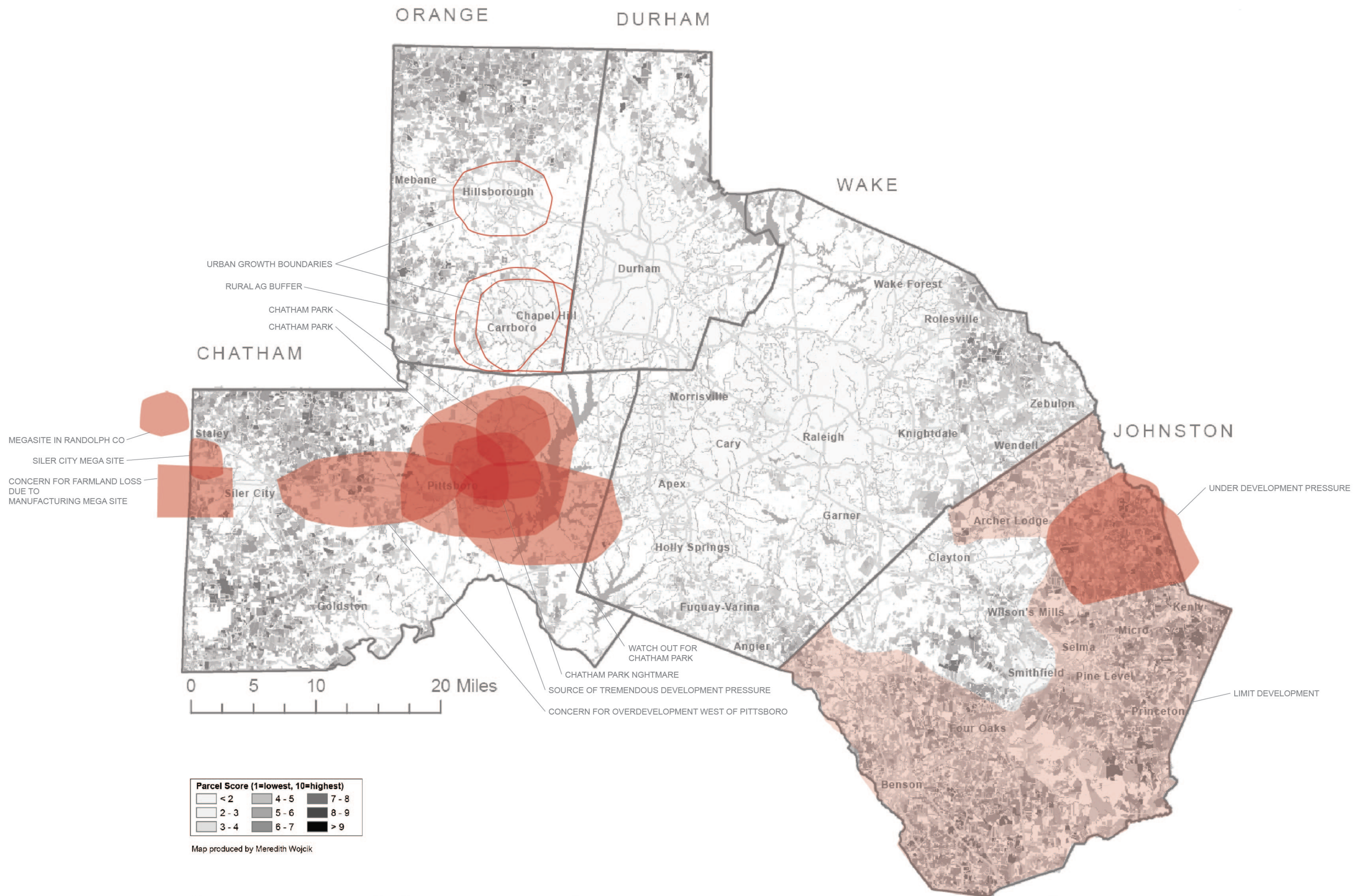
Notes, Summary of Map Sheets Comments



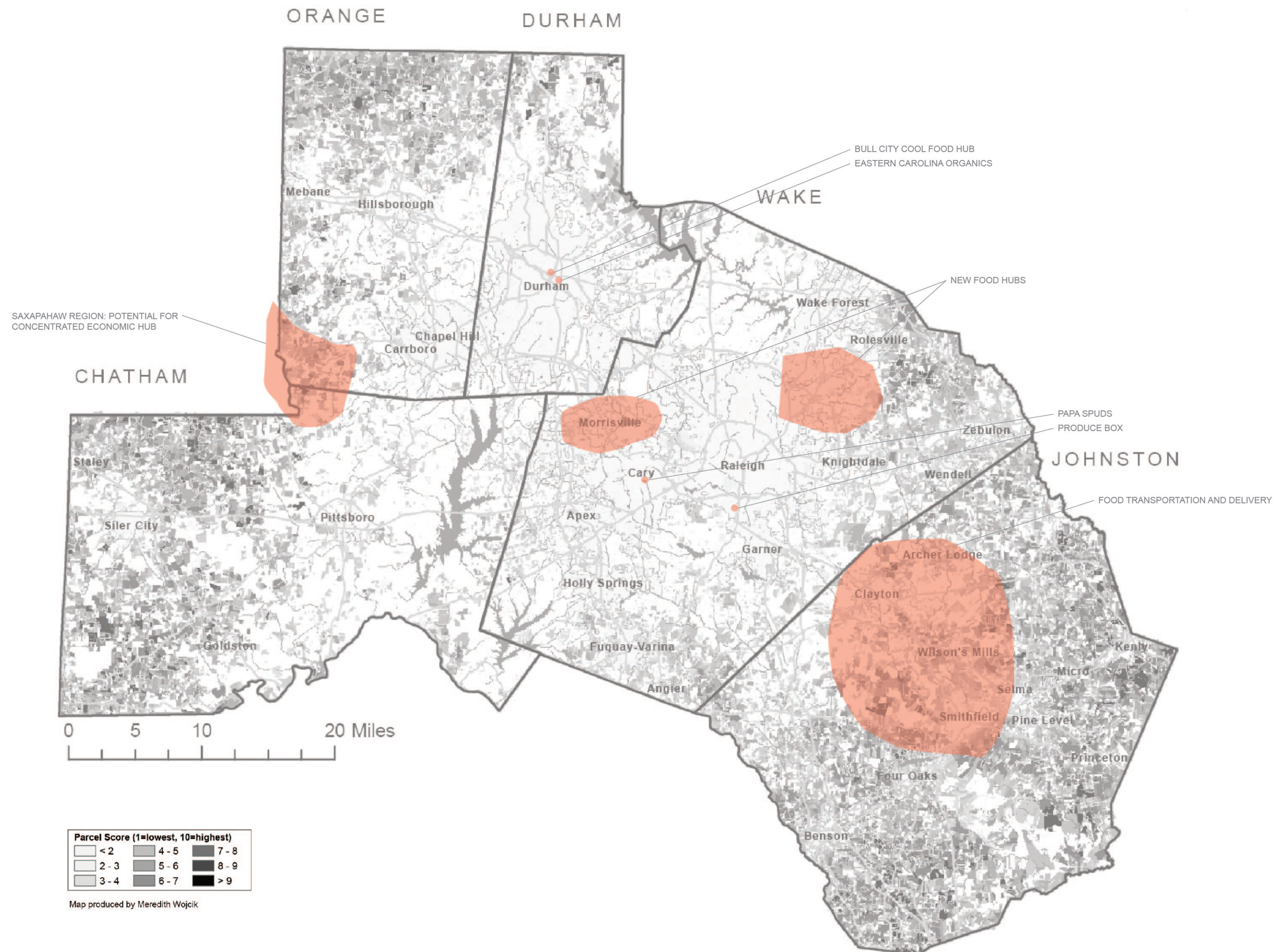
AG TRANSITION COMMENTS



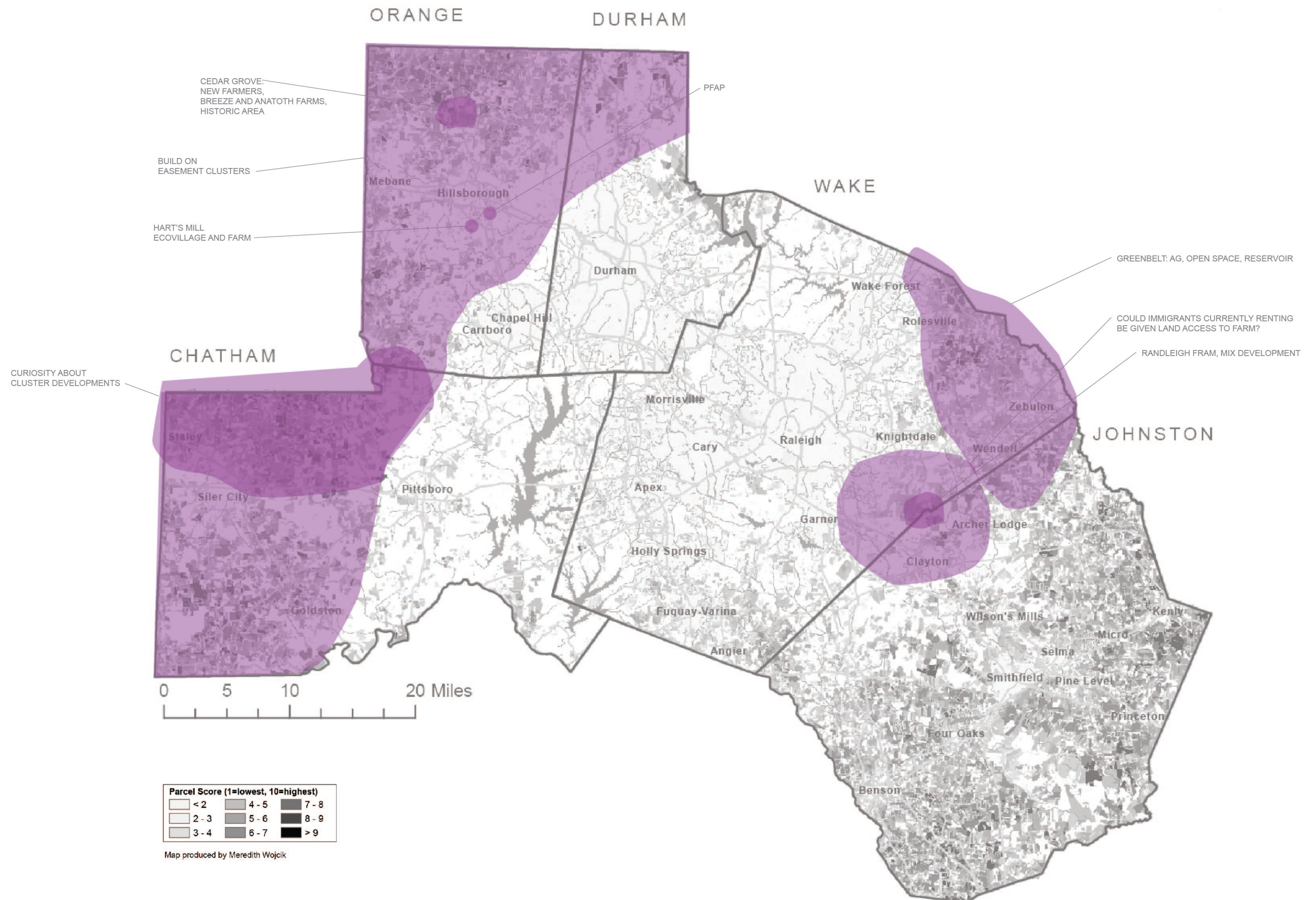
AGRITOURISM COMMENTS



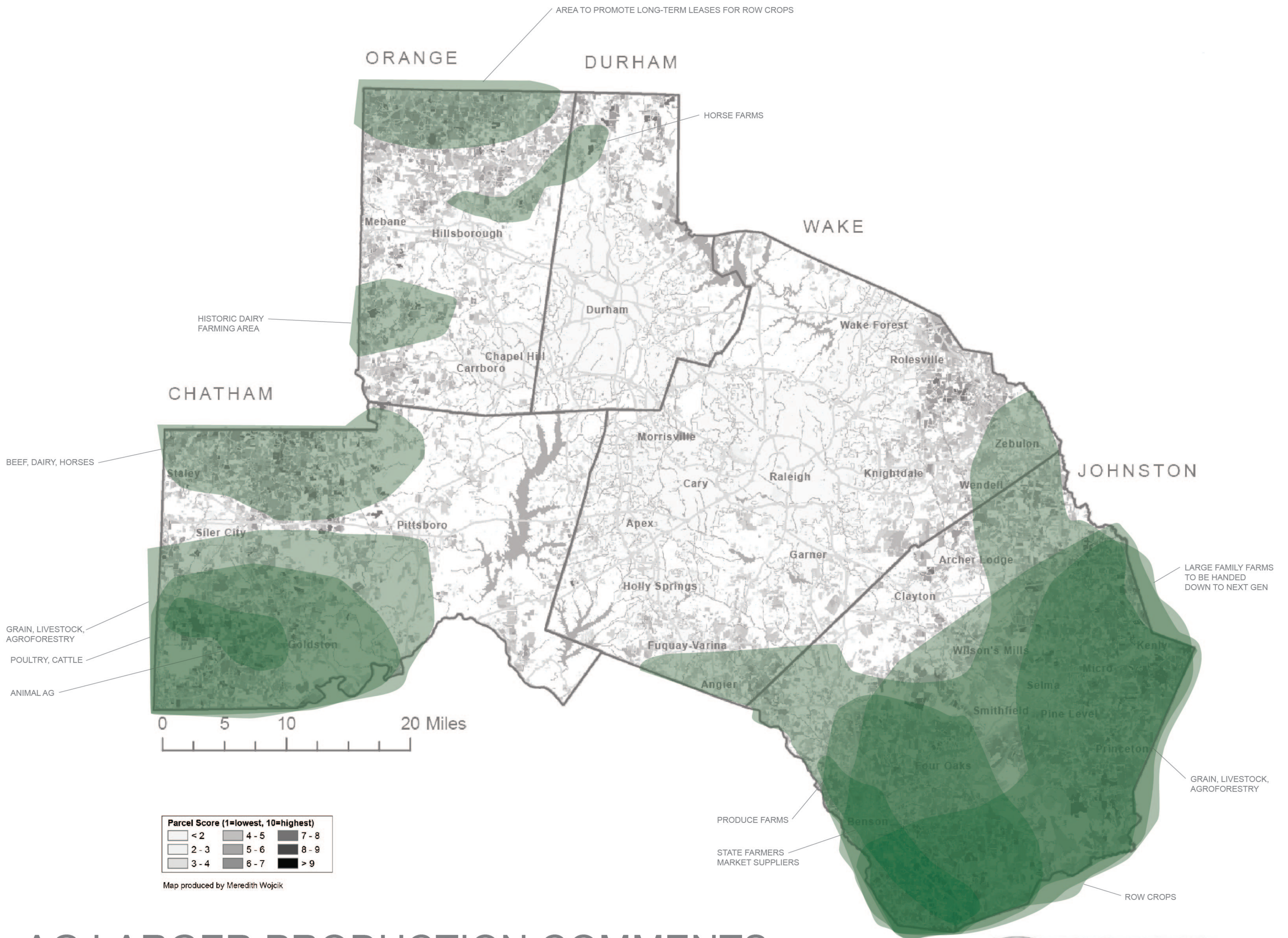
DEVELOPMENT COMMENTS



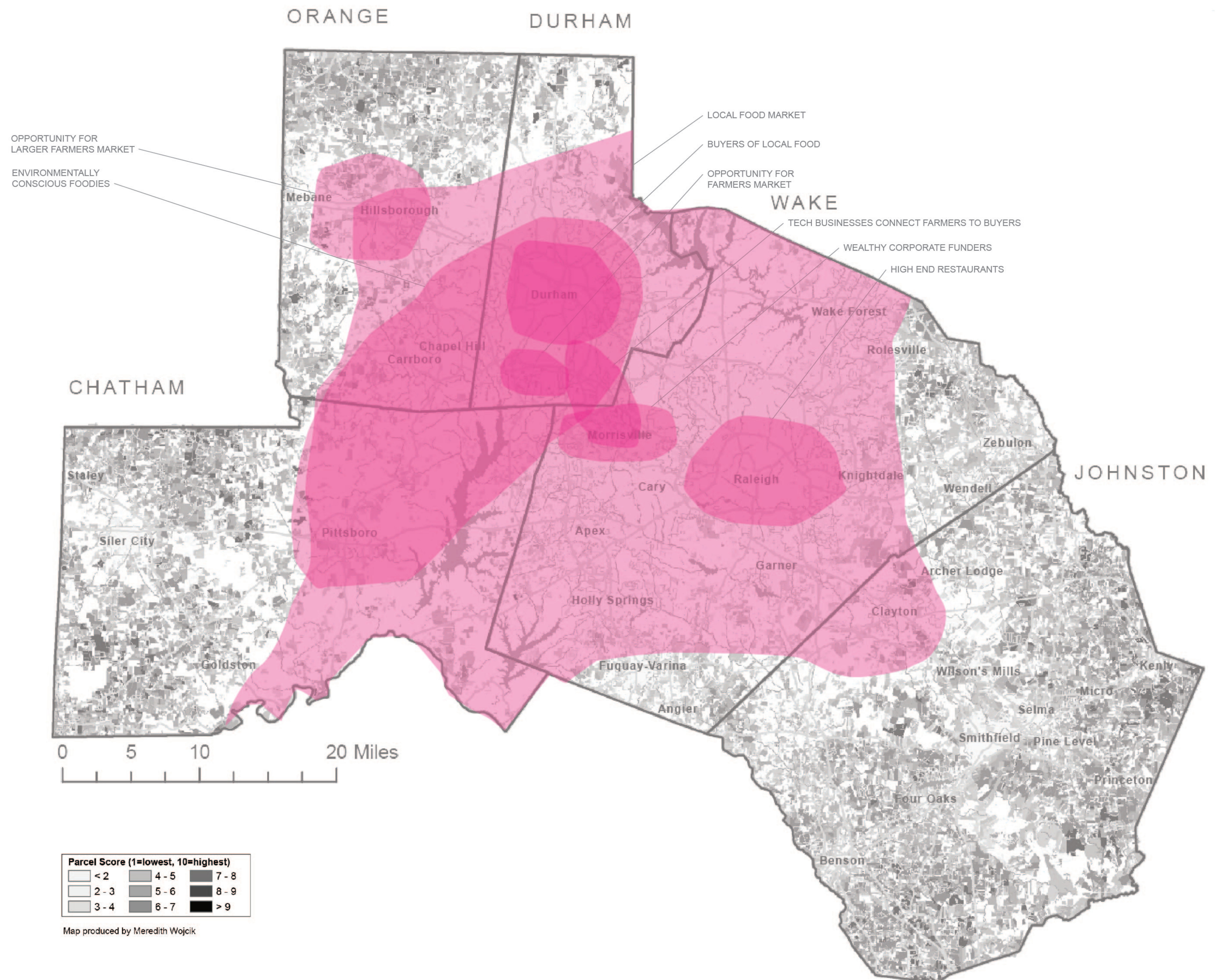
FOOD HUB COMMENTS



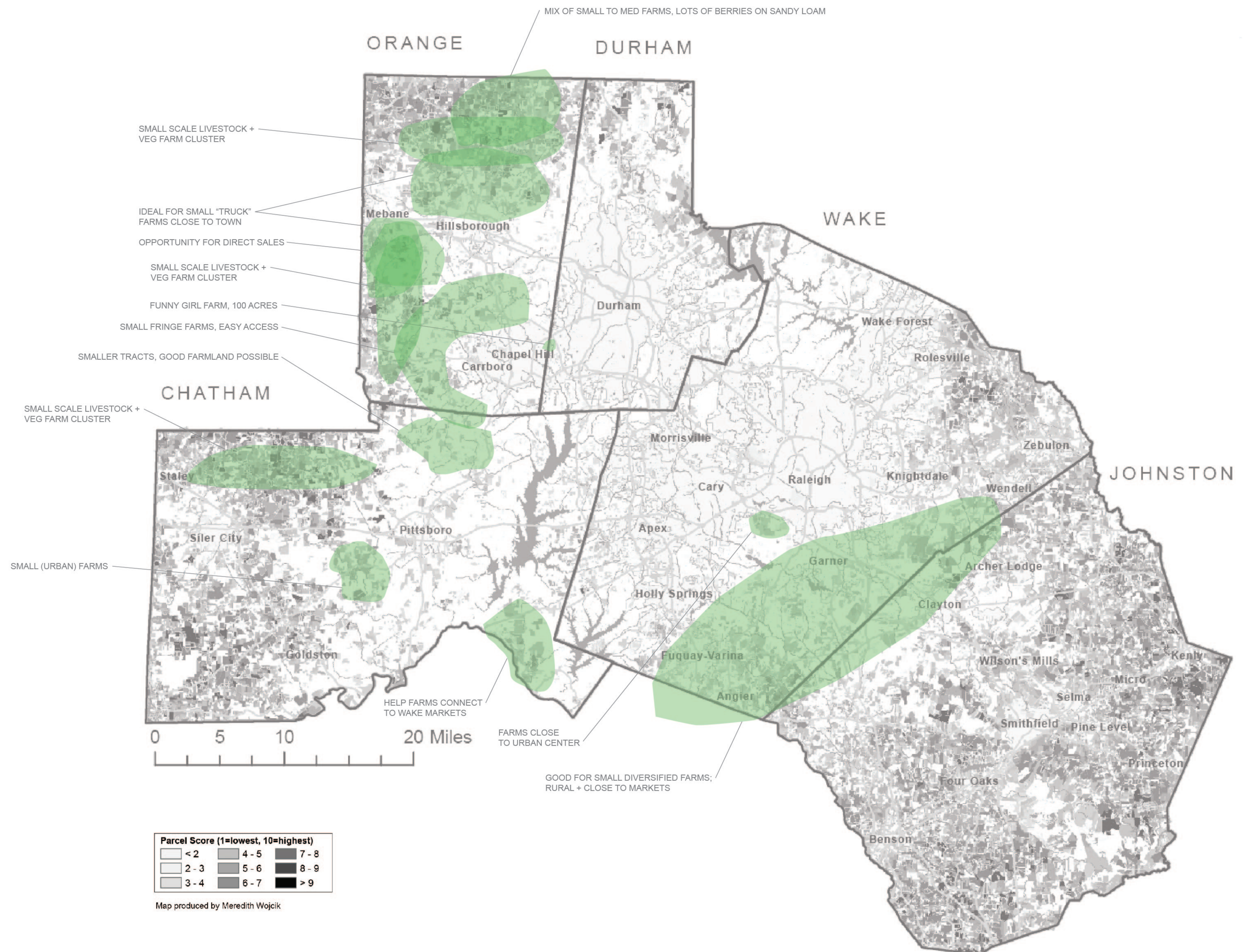
IDEAS + INNOVATION COMMENTS



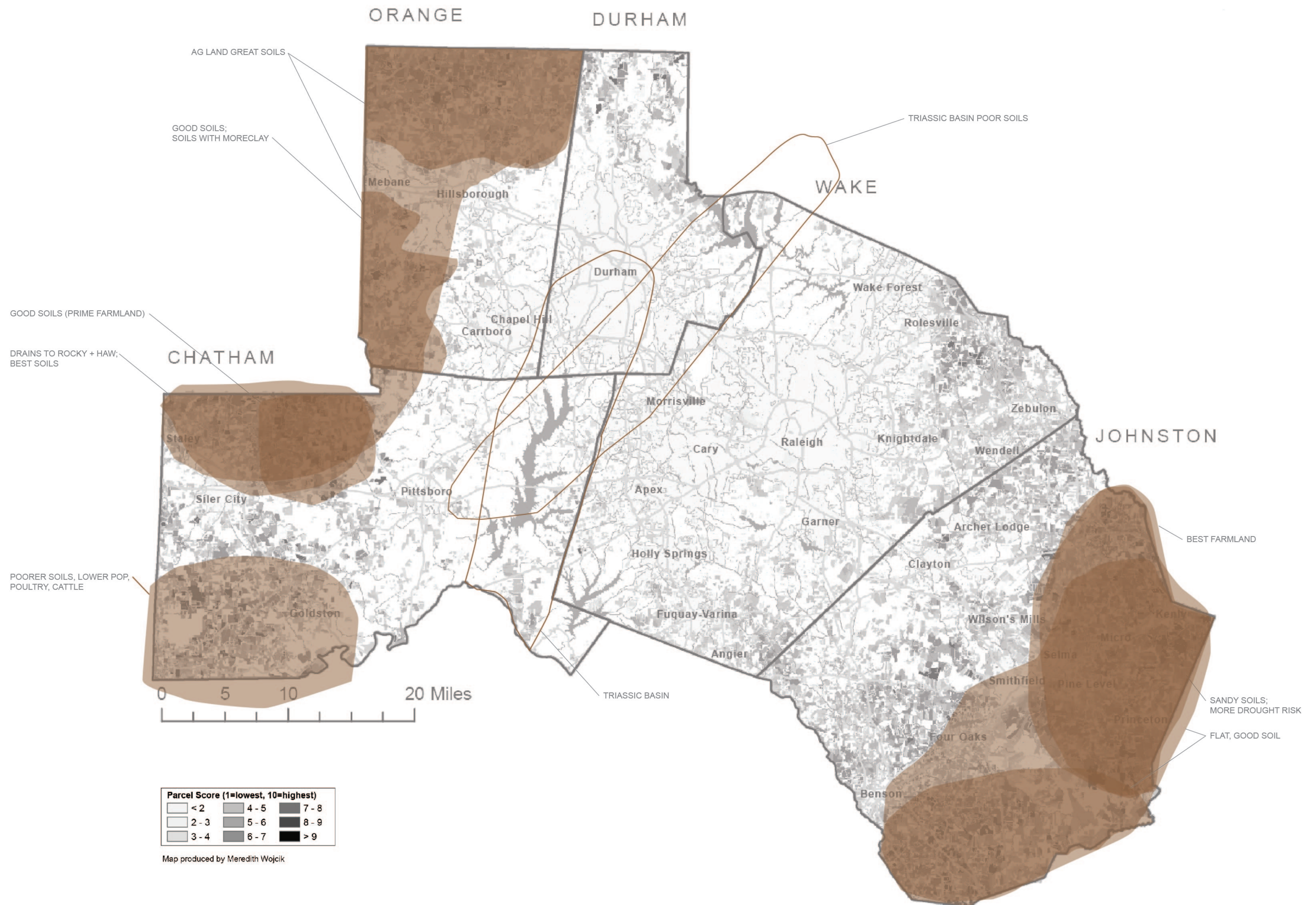
AG LARGER PRODUCTION COMMENTS



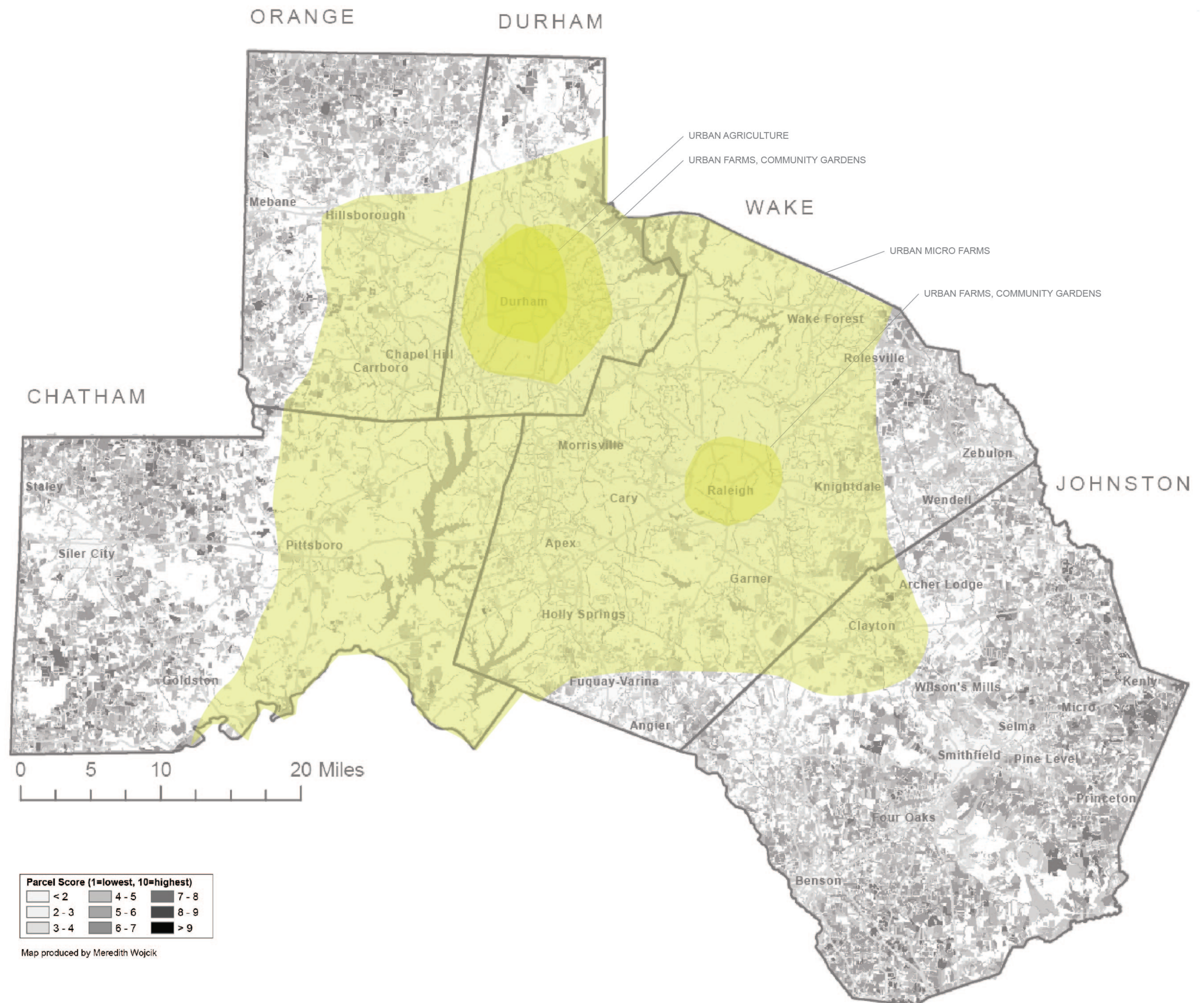
MARKETS COMMENTS



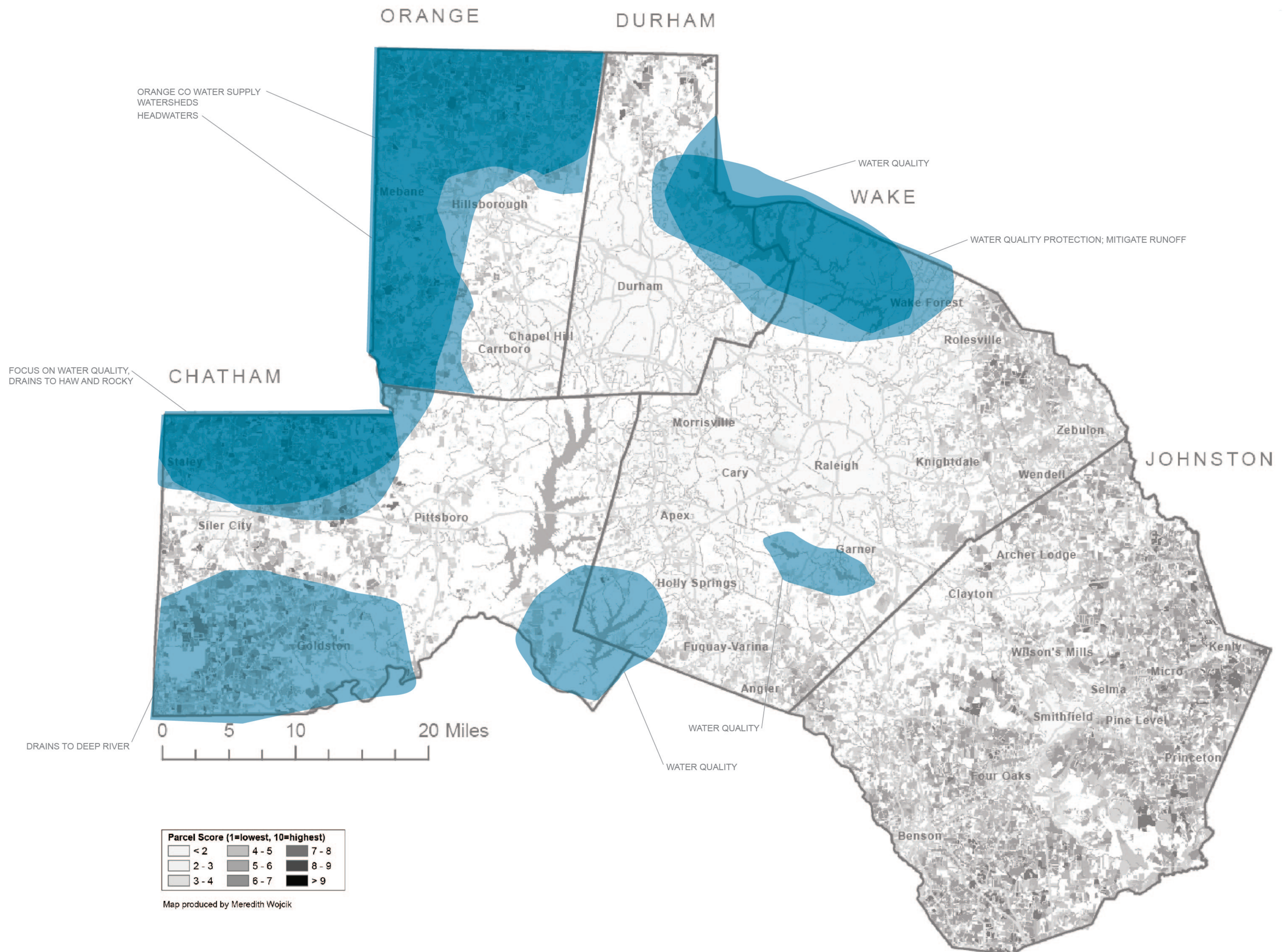
AG SMALLER DIVERSIFIED COMMENTS



SOIL COMMENTS



URBAN AG COMMENTS



Map produced by Meredith Wojcik

WATER QUALITY/WATERSHED COMMENTS

Notes, summary of map sheets

Ranked Categories	No of Comments on maps
Ag: Smaller Diversified	13
Development issues	13
Ag: Larger production	12
Soils	10
Ideas + Innovation	8
Water Quality + Watersheds	8
Markets	8
Food Hubs	7
Ag: Transitions	4
Ag: Urban	4
Agritourism	3

High level takeaway's from maps:

Aside from urban ag and location of market capacity, Wake and Durham County received least number of comments. Comments about good soils, small ag, and large ag comments mapped well onto each other, with exception of farmland in SE Wake Co. and SW Chatham, which lay outside good soil comments. Transition ag comments all located in N Orange and N Durham counties. Food hub location comments mostly located outside of good soil comment areas. Only agritourism comments were located in Orange and N Durham. All development pressures comments located in Chatham and Johnston. All development pressures comments coincide with good soils except Chatham Park, which overlay comments on the Triassic Basin, noted as having poor soils. No watershed or water quality comments noted in Johnston. Good soils comments in Chatham, Orange, Durham all coincide with comments on water quality or watershed issues.

Other notes made on map sheets:

Young farmers want to live close to urban areas.
Greater understanding overall food system so wealthiest donate to support system
Reduce government regulation on farmers
Use metrics to describe food and water volumes per person
Tie-in all county level ordinances, plans, missions
What is area south of Pittsboro? What activities there? It is super accessible to Raleigh gamelands
Concentric circle diagram with urban ag at center, small ag in next ring out, and presumably large ag in outermost ring

Identify highest quality soils and steer development to poor quality soils
How do we manage the movement of development?
How does land conservation become a 'partner' with increased development - working with to protect land resources?